

# AVON ENGLISH

THE SCHOOL OF  
ENGLISH  
SINCE 2002



PARIS 2024



QUALITY ENGLISH LANGUAGE COURSES FOR STUDENTS



# WELCOME

## To Our School

Avon English Academy is a newly opened institution in Cebu that offers innovative English education programs and outstanding student support services. With the collaboration of passionate and experienced teachers and staff, this academy provides students with the best educational environment and an amazing learning experience.

### Avon's Mission and Vision

The vision of Avon English Academy is to become a world-class English education center. We aim to support our students in achieving international competitiveness by providing innovative and effective English language learning methods.

Our goal at Avon English Academy is to help students speak English with confidence. We offer customized educational programs tailored to individual needs and skill levels, to enhance their learning efficiency and ensure the best results possible. Additionally, with our professional and friendly teachers, we strive to provide a safe and pleasant learning environment, with high levels of student satisfaction as one of our top priorities.

Moreover, Avon English Academy is committed to ongoing development and innovation. We continuously introduce cutting-edge educational technology and effective teaching methodologies to provide our students with the best possible education. We also endeavor to develop diverse educational programs for students from various cultural backgrounds, fostering a global learning environment where students from around the world can come together and learn.

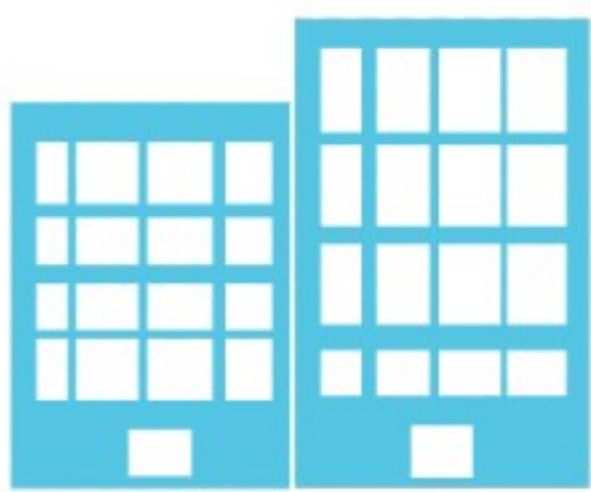
## Index

|                      |       |
|----------------------|-------|
| Welcome              | 2     |
| Why Philippines      | 3     |
| Avon is              | 4     |
| Map                  | 5     |
| Courses              |       |
| General ESL          | 6     |
| Intensive ESL        | 7     |
| Junior ESL           | 8     |
| Junior guardian      | 9     |
| Business English     | 10    |
| English for Aviation | 11    |
| IT English           | 12    |
| FIDIC review         | 13    |
| TOEIC                | 14    |
| IELTS                | 15    |
| Tuition fee          | 16    |
| Our service          | 17    |
| Travel information   | 18    |
| School rules         | 19-20 |
| Our school           | 21    |



## Why Choose the Philippines for your English education?

1. Firstly, the Philippines has a rich history of English education influenced by the United States. As a result, there are numerous highly skilled English teachers in the country, providing students with a natural and effective way to learn the language.
2. In addition, the cost of living and education in the Philippines is considerably lower than in other countries offering English language education. This is one of the reasons why studying ESL in the Philippines has become increasingly popular among foreign students.
3. At Avon English Academy, we provide customized educational programs focused on one-on-one classes, ensuring the optimal learning experience for each individual student based on their level and specific needs. Furthermore, due to the minimal time difference between the Philippines and Korea, it is an ideal environment for students to adapt quickly and benefit from our friendly and professional teachers who are dedicated to improving their students' learning abilities.
4. The Philippines offers an international education environment where students from diverse cultural backgrounds can come together. This allows students to experience different cultures, interact with students from various countries, and develop a better understanding of different cultures while learning English.
5. Lastly, the Philippines is a beautiful country with stunning beaches, natural landscapes, and diverse cuisine. The country offers students a chance to combine English education with various tourist activities at these popular destinations.



Located in the heart of downtown Cebu, Avon English Academy is conveniently situated near many popular restaurants, shopping centers, and other facilities, providing students with easy access to these places after class. Our school's strategic positioning ensures maximum convenience and learning efficiency, allowing students to receive comfortable and effective English education.



At Avon English Academy, we trust in the Cambridge English Program, recognized as one of the world's top educational institutions. By utilizing the Cambridge curriculum, our teachers have received professional training to ensure that lessons are conducted efficiently and in sync with the curriculum. Moreover, our teachers regularly participate in tests and evaluations based on Cambridge standards to maintain the quality of our education.



# Avon Is

1. Avon is a certified SSP and TESDA accredited educational institution recognized by the Philippine government. Our exceptional English education is facilitated by highly qualified teachers who utilize a well-designed curriculum to provide students with a comprehensive understanding of the English language.
2. The experienced educators and staff at Avon have over a decade of expertise in international student education, ensuring that students from diverse Asian backgrounds receive quality education in a culturally sensitive environment.
3. In the wake of the COVID-19 pandemic, Avon has undergone a transformation and has emerged with a new outlook. With more than two decades of experience in the field of English language education, Avon stands ahead of its contemporaries in the Philippines.
4. Avon offers a diverse range of cuisine to cater to the tastes of its international students.
5. We hold a deep respect for our teachers' professionalism and extensive experience, which is why they are carefully selected through a rigorous screening process that assesses their English proficiency and teaching capabilities. Our teachers' ability to identify individual student levels and implement appropriate teaching methods is essential to promoting their learning motivation and academic success.
6. Despite being situated in the heart of the city, Avon provides a comfortable and welcoming environment for its students. The open structure of the school is designed to create a relaxed atmosphere that is conducive to learning. The institution also provides ample space for students to relax and interact with friends from various parts of the world. The "Stair (way to heaven) Cafe" offers delectable coffee and snacks for students to indulge in, further enhancing the learning experience.
7. The welcoming and hospitable nature of Filipinos towards international students has earned the Philippines a reputation as an ideal destination for studying English. The Philippines offers visa exemption for English language learners from all countries except China, making the entry process a breeze for students.





# Map

Tel : 032 340 4923 / 0967 4583 459 (Globe) / 0960 2820 356 (Smart)  
Address: Maroo Building, 888 Paseo Saturnino, Cebu City, Cebu, 6000





# ESL Course - General / Basic English for Communication

## ESL

The General ESL course is comprehensive English language education program designed to cater to students of varying proficiency levels, ranging from beginners to intermediate learners. The course encompasses a broad range of topics, from fundamental grammar and vocabulary to listening, speaking, reading, and writing skills, all aimed at enhancing the English proficiency of learners in everyday situations.

Throughout the course, students are encouraged to participate in various activities and discussions that promote active engagement, and are provided with ample opportunities to practice and improve their language skills using English expressions used in real-life situations. By doing so, learners acquire the ability to utilize English more effectively..

The General ESL course is designed to accommodate learners of all levels, allowing for flexibility and individualized adaptation to ensure an optimal learning experience and accurate assessment of students' language proficiency.







### General course:

This program is ideal for those seeking to improve their English conversational abilities within a short period, particularly individuals working in an international setting, frequent travelers, and those planning to pursue further studies in an English-speaking academic environment. Students will be taught using the Cambridge curriculum, with the course curriculum customized to cater to the proficiency level of each student. The school conducts mid-term and final assessments to monitor students' progress, and the General ESL course offers various activities that aim to enhance students' communication skills using English.

|                   |  |
|-------------------|--|
| <b>Period</b>     | 1 to 24 weeks                            |
| <b>Start Date</b> | Every Monday                             |
| <b>Level</b>      | All Levels                               |
| <b>Class</b>      | 1:1 class 4 hours<br>3 hours group class |

#### Changes you can feel in a short time

-  Natural learning through basic conversation
-  improve communication skills
-  improve pronunciation or intonation
-  Basic Vocabulary Replenishment

### Sample Weekly Learning Schedule

| Period | Time          | Subject             | Teacher     | Room      |
|--------|---------------|---------------------|-------------|-----------|
| 1      | 08:00 – 08:50 | 1:1 Speaking        | T. Kate     | M08       |
| 2      | 08:55 – 09:45 | 1:1 Listening       | T. Nicole   | M29       |
| 3      | 09:50 – 10:40 | Grammar group       | T. Pamera   | G1        |
| 4      | 10:45 – 11:35 | Discussion group    | T. Scott    | G3        |
| 5      | 11:40 – 12:30 | 1:1 Reading         | T. Kimbery  | M15       |
|        | 12:30 – 01:30 | lunch               |             | Cafeteria |
| 6      | 01:30 – 02:20 | 1:1 Writing         | T. John     | M24       |
| 7      | 02:25 – 03:15 | Pronunciation group | T. Isabelle | G4        |
| 8      | 03:20 – 04:10 | Business special    | T. Steve    | Special   |



# ESL Course - Intensive / Advanced English for Communication



## Intensive ESL course:

Intensive ESL is an advanced course designed for students who already have a solid grasp of the language and wish to enhance their vocabulary, grammar, and communication skills to a higher level. Throughout this course, we delve into more complex and nuanced language structures and grammar rules, with the aim of helping students communicate more naturally and fluently in English. Furthermore, students will also learn specialized vocabulary and communication skills related to professional or academic fields such as business courses.

The Intensive ESL classes apply a customized teaching approach tailored to the individual needs and level of each student. This approach enables students to identify their strengths and weaknesses, and effectively improve their English proficiency. Additionally, case studies, role-playing activities, and presentations are incorporated to improve the practical use of English language skills in real-life situations. This course helps students enhance their English communication skills to a more professional level.

|                   |  |
|-------------------|--|
| <b>Period</b>     | From 1 week to 24 weeks                  |
| <b>Start Date</b> | Every Monday                             |
| <b>Level</b>      | Pre Intermediate                         |
| <b>Class</b>      | 1:1 class 5 hours<br>2 hours group class |

**Course change** At Avon, we provide optional one-on-one classes or the option to switch from group classes to one-on-one classes to help students achieve their goals quickly. Additional fees may apply. Moreover, students can learn new vocabulary daily and supplement their previous learning through vocabulary tests to further enhance their professional communication skills.



# Junior ESL



The Primary ESL (English as a Second Language learning program for children and teenagers) adopts the Cambridge curriculum, providing English learning projects for children and teenagers who are non-native English speakers. This program, specifically designed for children and teenagers, provides a wealth of activities and materials aimed at improving their basic grammar, vocabulary, reading comprehension, writing, listening, and speaking skills. The Cambridge curriculum can help students learn English at the appropriate level according to their age and abilities, enabling them to communicate smoothly in an international environment.



We provide an appropriate learning environment based on the students' age and abilities, supporting education that meets individual needs and goals.



The differentiated curriculum helps students effectively develop various English skills such as grammar, vocabulary, reading comprehension, writing, listening, and speaking through a variety of learning materials and activities.



The curriculum focuses on teaching English used in real life, enabling students to communicate smoothly in an international environment.

## Along with engaging activities.

|                   |  |
|-------------------|--|
| <b>Period</b>     | From 1 week to 24 weeks                      |
| <b>Start Date</b> | Every Monday                                 |
| <b>Level</b>      | Intermediate                                 |
| <b>Class</b>      | 1:1 class - 4 hours<br>Group class - 2 hours |





# Junior Guardian

This course is designed for parents who are learning the language short-term along with their beginner students. Parents can choose to participate in either one-on-one or group lessons for 4 hours a day. As this is an elective course, there is no penalty for absences. During regular class hours, you are also free to go out.



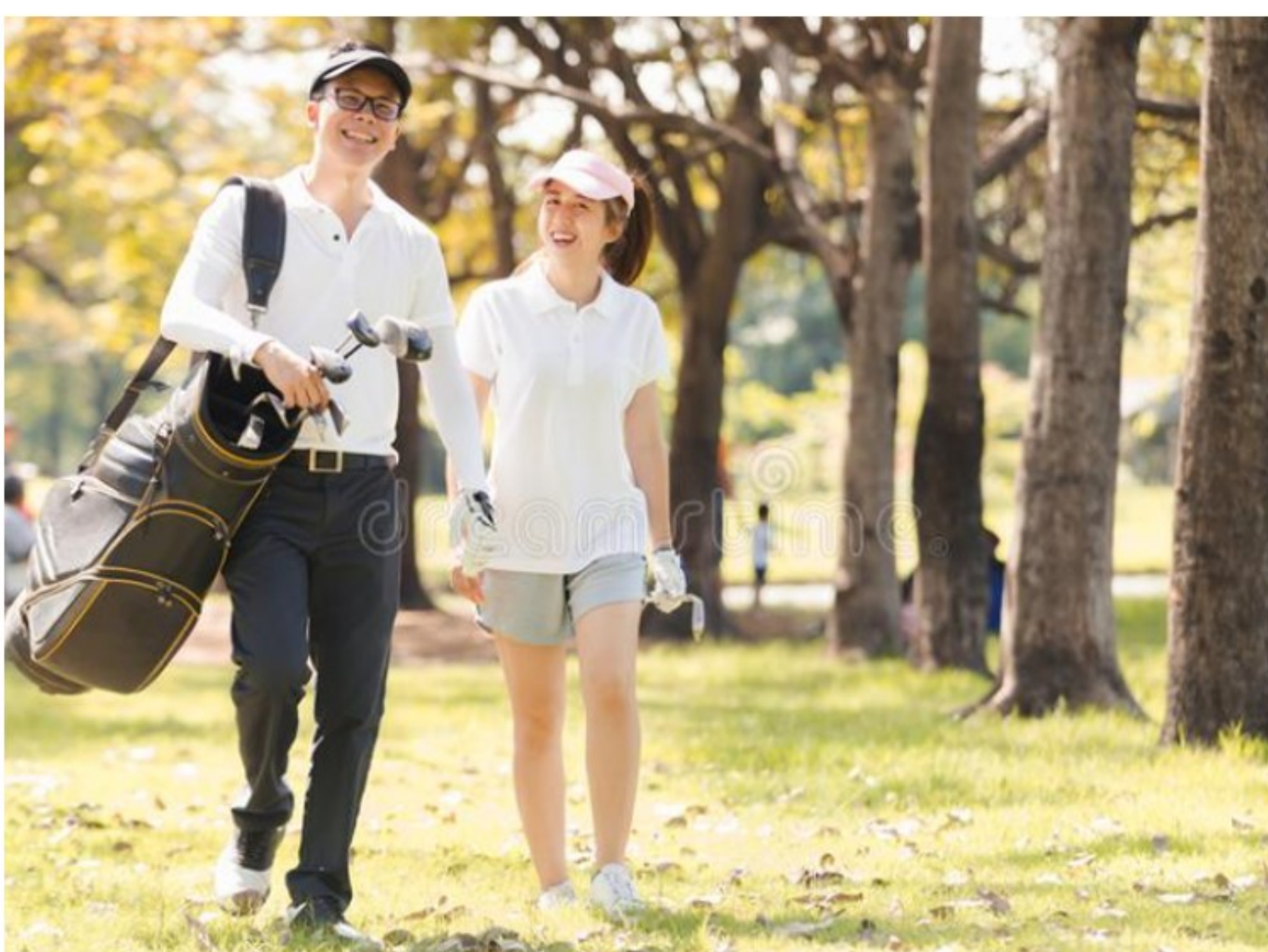
Parents and children participating together in this experience will become the best form of education that requires no further explanation. Through co-learning, parents can directly observe and understand their child's learning process and progress. In this way, parents can help their children improve learning habits, identify areas that need special support, and take appropriate measures.

Furthermore, when parents and children engage in language training together, the child feels the parent's serious attention to learning, which encourages them to work harder. This interaction can enhance communication between the child and the parent, creating a positive atmosphere where they understand and respect each other's learning experiences.

In summary, a language learning experience undertaken together by parents and children will strengthen their connection, enhance the sense of responsibility and interest in learning, and ultimately provide the most effective method of education for the child.

Spend valuable time with parents of children the same age, sharing common interests.

On the beautiful island of Cebu, you will create happy memories through engaging activities.



|                   |                                  |
|-------------------|----------------------------------|
| <b>Period</b>     | 1 to 24 weeks                    |
| <b>Start Date</b> | Every Monday                     |
| <b>Level</b>      | Intermediate                     |
| <b>Class</b>      | 4 hours<br>(one-on-one or group) |

\* This course is only available when accompanied by a junior.



# Business English

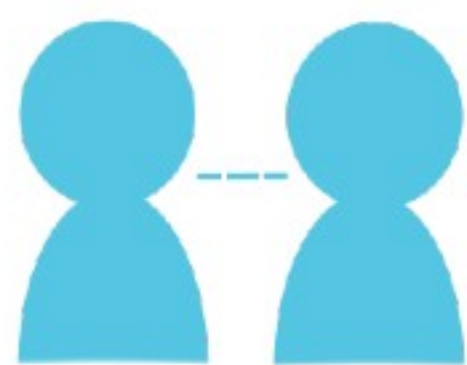
## Business Course

This program is designed for business professionals and economics major students working across various industries. Through the course, participants can enhance their professional expertise by developing their business English and soft skills. Soft skills refer to human abilities such as interpersonal relationships, communication, leadership, and problem-solving, rather than technical competencies. In a business context, the development of soft skills can help facilitate effective teamwork, better leadership, seamless customer interactions, and improved problem-solving capabilities.



|                   |  |
|-------------------|--|
| <b>Period</b>     | 1 to 24 weeks                            |
| <b>Start Date</b> | 3 or more people                         |
| <b>Level</b>      | Intermediate                             |
| <b>Class</b>      | 1:1 class 4 hours<br>3 hours group class |

The instructor fosters active engagement with real-life business simulations, enabling students to reason actively and adeptly assume a leading role in individual or group presentations. Business English (BE) is a course that teaches how to handle fundamental work issues, such as email writing, report composition, presentations, negotiation, and customer interaction. Avon's learning program emphasizes education that enables students to acquire various skills.



Confident and fearless communication helps students in seizing every opportunity for communication and actively presenting their perspectives or ideas.



Our course enhances business English skills in tasks like drafting contracts, writing professional emails, and negotiating deals. We also promote natural, confident English speaking and cross-cultural communication through tone and gestures.



Improve your natural and confident English speaking abilities, including the use of tone of voice and body language to effectively convey emotions and actions that are culturally appropriate.



# English for Aviation



Avon provides a curriculum in aviation English to cater to aspiring flight attendants and pilots who recognize the challenge of meeting the International Civil Aviation Organization's (ICAO) stringent English language requirements. The course aims to equip individuals with aviation English terminology and communication skills before venturing into the airline industry.

A flight attendant's job demands not only physical health and comely appearance but also consummate proficiency in the English language. Airlines evaluate candidates based on their English language skills during the recruitment and education process. The aviation English course not only enhances flight attendants' language ability but also strengthens their problem-solving skills needed in the work process.



\* Avon's expert instructors provide industry-specific knowledge to enhance flight attendants' competence and professionalism, demonstrating our commitment to superior aviation education.



\* Our curriculum offers practical, applicable skills for diverse situations and promotes problem-solving through role-play scenarios.

\* Our course guarantees personalized attention with a small class and 1:1 teacher-to-student ratio. Students learn comprehensive listening, speaking, reading, and writing skills specific to the aviation industry.



\*The course is taught by aviation industry experts, who guide students through the program's duration.

\* A comprehensive essay test is conducted at the end of the course.

|                   |  |
|-------------------|--|
| <b>Period</b>     | From 1 week to 24 weeks                      |
| <b>Start Date</b> | Every Monday                                 |
| <b>Level</b>      | Intermediate                                 |
| <b>Class</b>      | 1:1 class - 4 hours<br>Group class - 2 hours |

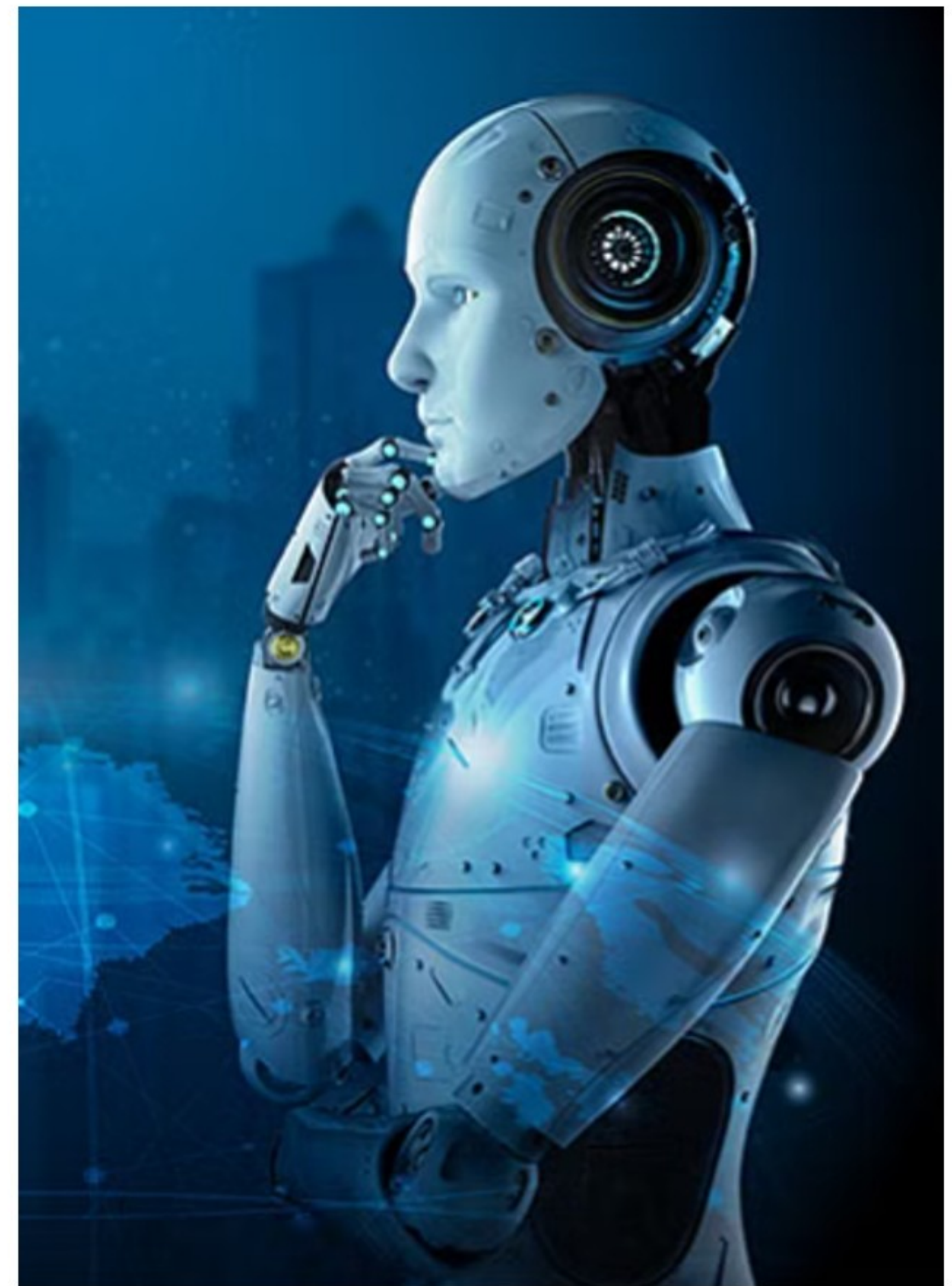




# IT English

In the realm of the IT industry, updates are considered an essential factor due to continuous technological advancements. Therefore, possessing commendable English proficiency can be of immense assistance to individuals seeking to expand their learning opportunities and improve their personal aptitudes, both domestically and abroad. Avon's IT English course offers contemporary educational content to address the latest trends and technologies, thereby proving effective in elevating students' English proficiency. Make an investment in this course to narrow the gap in your English learning and experience astonishing results.

Over 80% of programming languages and IT information are provided in English. Given the ever-evolving nature of the IT industry, waiting for an interpreter to translate relevant information may already be too late to sustain competitiveness and enhance personal abilities.



This course is designed to cover a diverse range of vocabulary used in the IT industry, including programming, software engineering, computer hardware, networking, databases, testing, and support.



Through the acquisition of English communication from basic progressing towards an advanced level, students can refine their ability to utilize professional terminology in their work and communication. This can enable them to communicate confidently within the industry, augmenting efficiency and performance in their work.

```
p.push(c));c}function g(a,b){var l=a  
,d}function i(a){return p.remove(a)  
)#c.height(99);innerWidth(),a.remove  
mousedown(this$draggableMode:bind(th  
ollbar$horizontal"><div class="scro  
ih;remove:i}q[1];q=1e3;r=a.scrollbar  
pScrolling():this.persistent=!0;this  
this.scrolling=!1,this},updateFill:fu  
enX,scrollTop:this.context.scrollTop,  
on(){return this.bar.remove(),this}  
tion().updateFill()}};updateScrollPo
```

|                   |  |
|-------------------|--|
| <b>Period</b>     | 1 to 24 weeks                            |
| <b>Start Date</b> | Every Monday                             |
| <b>Level</b>      | Intermediate                             |
| <b>Class</b>      | 1:1 class 4 hours<br>3 hours group class |



This brochure is based on the content proposed and composed by the artificial intelligence ChatGPT3.



# FIDIC review

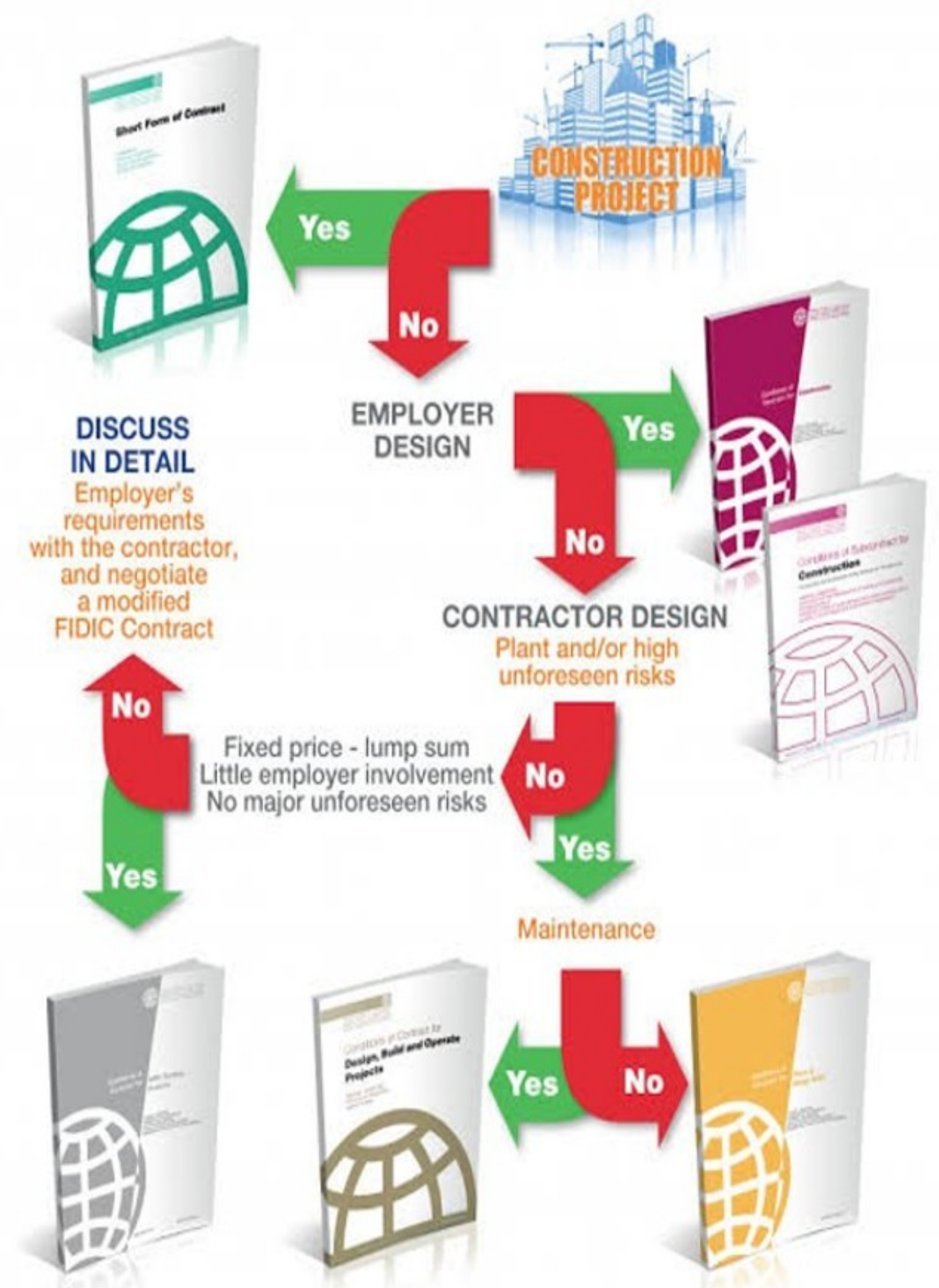
**FIDIC** The acronym FIDIC stands for the International Federation of Consulting Engineers, an organization that provides standardized formats for construction project contracts used internationally. Notable among the construction project contract formats developed by FIDIC are the Red Book, Yellow Book, and Silver Book.

The Red Book contract serves as the general agreement for construction projects, used to clearly define contractual conditions between the construction firm executing the project and the client, with the objective of averting and resolving disputes. The contract stipulates the responsibilities of each party, the scope of the project, delivery periods, contract amounts, and payment terms, among others, to facilitate the smooth execution and management of the construction project.

The Yellow Book contract, on the other hand, serves as the contract for design and build projects, with the construction firm performing the design and the construction work and serving as a contracting party. Although it covers similar content as the Red Book contract, the Yellow Book contract imposes more design responsibilities on the construction firm.

Lastly, the Silver Book contract is designed for turnkey projects, where specialized construction firms take full control of the entire project cycle, encompassing design, construction, operation, and maintenance. While it covers content similar to that in the Red Book and Yellow Book contracts, it also clearly stipulates the responsibilities for comprehensive services, including design, construction, operation, and maintenance.

|                   |  |
|-------------------|--|
| <b>Period</b>     | 1 to 24 weeks                            |
| <b>Start Date</b> | 2 or more people                         |
| <b>Level</b>      | Intermediate                             |
| <b>Class</b>      | 1:1 class 4 hours<br>3 hours group class |



Learning FIDIC at an ESL school can be a wise choice. ESL schools offer various programs for improving English proficiency and can provide an avenue for learning FIDIC's English contract format and related terminology and syntax.

At Avon, students can study with students from diverse nationalities and acquire knowledge of different cultures and customs, which can be a significant asset when dealing with international construction contracts, such as FIDIC, where understanding and respect for diverse cultures and customs are critical.

Studying FIDIC in English aligns with the globally recognized standard contract language, providing essential competencies for business activities in the international construction market and enabling smooth communication and collaboration with various countries and companies.



# TOEIC

## TOEIC - Test of English for International Communication

Avon's TOEIC exam preparation program aims to help students in gaining confidence for the TOEIC exam, an internationally recognized exam that focuses on measuring English communication skills. Through this program, students are provided with a precise roadmap of knowledge on the four fundamental English skills and are guided on how to efficiently utilize their test-taking time. Additionally, this program enhances students' English proficiency that can be applied in their daily lives or in their professional careers and improve their international communication skills.

|                   |  |
|-------------------|--|
| <b>Period</b>     | 1 to 24 weeks                            |
| <b>Start Date</b> | Every Monday                             |
| <b>Level</b>      | Pre- Intermediate                        |
| <b>Class</b>      | 1:1 class 4 hours<br>3 hours group class |

- A TOEIC test preparation teacher should have experience and be capable of supporting students in their learning, providing information, and guiding them through the formal TOEIC test procedures.

- Exposure to an English-speaking environment, both inside and outside of the classroom, greatly enhances learning efficiency for students.

### Sample Weekly Learning Schedule

| Period | Time          | Subject          | Teacher     | Room         |
|--------|---------------|------------------|-------------|--------------|
| 1      | 08:00 – 08:50 | 1:1 listening    | T. Kate     | M08          |
| 2      | 08:55 – 09:45 | 1:1 speaking     | T. Nicole   | M29          |
| 3      | 09:50 – 10:40 | Grammar group    | T. Pamera   | G1           |
| 4      | 10:45 – 11:35 | Writing group    | T. Scott    | G3           |
| 5      | 11:40 – 12:30 | 1:1 writing      | T. Kimberly | M15          |
|        | 12:30 – 01:30 | lunch            |             | Cafeteria    |
| 6      | 01:30 – 02:20 | 1:1 Writing      | T. John     | M24          |
| 7      | 02:25 – 03:15 | Listening group  | T. Isabelle | G4           |
| 8      | 03:20 – 04:10 | Business special | T. Steve    | Special room |

- Avon creates individualized study plans for each student in TOEIC test preparation to optimize their learning experience and achieve their desired score.
  - The TOEIC course offers a standardized curriculum covering the four basic skills of listening, speaking, reading, and writing, with an emphasis on the two skills required for the TOEIC 2 Listening and Reading test.
- A mandatory weekly TOEIC test is administered to enable students to track their progress and simulate the actual test environment during their training.

|                     |  |  |  |  |  |  |  |  |  |  |  |
|---------------------|--|--|--|--|--|--|--|--|--|--|--|
| Registration Number |  |  |  |  |  |  |  |  |  |  |  |
| Name                |  |  |  |  |  |  |  |  |  |  |  |

TOEIC Form ST-05

S011210



**TOEIC® Listening and Reading Test**





# IELTS

## IELTS - International English Language Testing System

The preparatory course for the IELTS examination offered by Avon is conducted exclusively in English. This program is an essential for undergraduate and graduate students who are planning to study abroad or immigrate. The course provides equal knowledge of the four basic skills required for the IELTS exam: listening, speaking, reading, and writing. Additionally, through practice in grammar and vocabulary expansion, and application of English communication in everyday situations, students are effectively supported to not only achieve their score goals but also to cope with practical use of the language.

Enrolling in the IELTS program at Avon provides students with the following benefits:

The assessment of the student's abilities and establishment of an appropriate learning path that saves time and effort.

Improve foundational knowledge and English listening skills through ESL classes.

If a student has a weakness in any of the four English skills, it can be strengthened through 1:1 reinforcement classes.

Receive weekly mock tests simulating the official IDP test, and teachers support students in supplementing their weaknesses by analyzing their strengths and weaknesses.

The instructors not only possess a passion for education but also are devoted to their profession and dedicated to their students' learning.

In an international learning environment, students have the opportunity to interact with friends from different countries and increase their chances to practice and communicate in English.



|                   |  |
|-------------------|--|
| <b>Period</b>     | 1 to 24 weeks                            |
| <b>Start Date</b> | Every Monday                             |
| <b>Level</b>      | Pre-Intermediate                         |
| <b>Class</b>      | 1:1 class 4 hours<br>3 hours group class |

### Sample Weekly Learning Schedule

| Period | Time          | Subject          | Teacher     | Room         |
|--------|---------------|------------------|-------------|--------------|
| 1      | 08:00 – 08:50 | 1:1 listening    | T. Kate     | M08          |
| 2      | 08:55 – 09:45 | 1:1 speaking     | T. Nicole   | M29          |
| 3      | 09:50 – 10:40 | Grammar group    | T. Pamela   | G1           |
| 4      | 10:45 – 11:35 | Writing group    | T. Scott    | G3           |
| 5      | 11:40 – 12:30 | 1:1 writing      | T. Kimberly | M15          |
|        | 12:30 – 01:30 | lunch            |             | Cafeteria    |
| 6      | 01:30 – 02:20 | 1:1 Writing      | T. John     | M24          |
| 7      | 02:25 – 03:15 | Listening group  | T. Isabelle | G4           |
| 8      | 03:20 – 04:10 | Business special | T. Steve    | Special room |



# Tuition Fee

| Tuition fee  |         |           |       | [USD]   |         |          |          |          |          |
|--|---------|-----------|-------|---------|---------|----------|----------|----------|----------|
| Course   | Tuition | Dormitory |       | 4 weeks | 8 weeks | 12 weeks | 16 weeks | 20 weeks | 24 weeks |
| <b>General ESL</b><br>1:1 4h / Group 3h                        | 790     | Single    | 1,620 | 2,510   | 4,920   | 7,330    | 9,740    | 12,150   | 14,560   |
|  |         | Double    | 890   | 1,780   | 3,460   | 5,140    | 6,820    | 8,500    | 10,180   |
|  |         | Triple    | 680   | 1,570   | 3,040   | 4,510    | 5,980    | 7,450    | 8,920    |
|  |         | Quadruple | 550   | 1,440   | 2,780   | 4,120    | 5,460    | 6,800    | 8,140    |
| <b>Intensive ESL</b><br>1:1 5h / Group 2h                      | 910     | Single    | 1,620 | 2,630   | 5,160   | 7,690    | 10,220   | 12,750   | 15,280   |
|  |         | Double    | 890   | 1,900   | 3,700   | 5,500    | 7,300    | 9,100    | 10,900   |
|  |         | Triple    | 680   | 1,690   | 3,280   | 4,870    | 6,460    | 8,050    | 9,640    |
|  |         | Quadruple | 550   | 1,560   | 3,020   | 4,480    | 5,940    | 7,400    | 8,860    |
| <b>Junior ESL</b><br>1:1 4h / Group 3h                         | 910     | Single    | 1,620 | 2,630   | 5,160   | 7,690    | 10,220   | 12,750   | 15,280   |
|  |         | Double    | 890   | 1,900   | 3,700   | 5,500    | 7,300    | 9,100    | 10,900   |
|  |         | Triple    | 680   | 1,690   | 3,280   | 4,870    | 6,460    | 8,050    | 9,640    |
|  |         | Quadruple | 550   | 1,560   | 3,020   | 4,480    | 5,940    | 7,400    | 8,860    |
| <b>Junior guardian</b><br>Select options for 4 classes or less | 750     | Single    | 1,620 | 2,470   | 4,840   | 7,210    | 9,580    | 11,950   | 14,320   |
|  |         | Double    | 890   | 1,740   | 3,380   | 5,020    | 6,660    | 8,300    | 9,940    |
|  |         | Triple    | 680   | 1,530   | 2,960   | 4,390    | 5,820    | 7,250    | 8,680    |
|  |         | Quadruple | 550   | 1,400   | 2,700   | 4,000    | 5,300    | 6,600    | 7,900    |
| <b>Business / Aviation / IT</b><br>1:1 4h / Group 3h           | 930     | Single    | 1,620 | 2,650   | 5,200   | 7,750    | 10,300   | 12,850   | 15,400   |
|  |         | Double    | 890   | 1,920   | 3,740   | 5,560    | 7,380    | 9,200    | 11,020   |
|  |         | Triple    | 680   | 1,710   | 3,320   | 4,930    | 6,540    | 8,150    | 9,760    |
|  |         | Quadruple | 550   | 1,580   | 3,060   | 4,540    | 6,020    | 7,500    | 8,980    |
| <b>IELTS / TOEIC</b><br>1:1 4h / Group 3h                      | 1,020   | Single    | 1,620 | 2,740   | 5,380   | 8,020    | 10,660   | 13,300   | 15,940   |
|  |         | Double    | 890   | 2,010   | 3,920   | 5,830    | 7,740    | 9,650    | 11,560   |
|  |         | Triple    | 680   | 1,800   | 3,500   | 5,200    | 6,900    | 8,600    | 10,300   |
|  |         | Quadruple | 550   | 1,670   | 3,240   | 4,810    | 6,380    | 7,950    | 9,520    |
| <b>FIDIC</b><br>1:1 4h / Group 3h                              | 3,700   | Single    | 1,620 | 5,420   | 10,740  | 16,060   | 21,380   | 26,700   | 32,020   |
|  |         | Double    | 890   | 4,690   | 9,280   | 13,870   | 18,460   | 23,050   | 27,640   |
|  |         | Triple    | 680   | 4,480   | 8,860   | 13,240   | 17,620   | 22,000   | 26,380   |
|  |         | Quadruple | 550   | 4,350   | 8,600   | 12,850   | 17,100   | 21,350   | 25,600   |

\* The total cost includes \$100 admission fee.

\* For programs shorter than 4 weeks, there will be a surcharge of 25% for 3 weeks, 50% for 2 weeks, and 75% for 1 week

\* Guardians can be parents or authorized individuals, with one guardian allowed

| Local payment            |                                       | [PHP]      |         |          |          |          |          |
|--------------------------|---------------------------------------|------------|---------|----------|----------|----------|----------|
| Item                     | Explanation                           | 4w or less | 8 weeks | 12 weeks | 16 weeks | 20 weeks | 24 weeks |
| <b>SSP</b>               | Special Study Permit (6 months)       | 6,800      | 6,800   | 6,800    | 6,800    | 6,800    | 6,800    |
| <b>VISA</b>              | Extension of stay                     |            | 3,440   | 8,150    | 10,890   | 13,630   | 16,370   |
| <b>ACR I-Card</b>        | Alien registration card               |            |         | 3,500    | 3,500    | 3,500    | 3,500    |
| <b>Student ID</b>        | Required for school use               | 200        | 200     | 200      | 200      | 200      | 200      |
| <b>Multi utility fee</b> | Room cleaning and water bills, etc.   | 800        | 1,600   | 2,400    | 3,200    | 4,000    | 4,800    |
| <b>Laundry</b>           | Up to 2 kg per occasion, twice a week | 800        | 1,600   | 2,400    | 3,200    | 4,000    | 4,800    |
| <b>Electricity</b>       | Up to 80 kW per month                 | 2,000      | 4,000   | 6,000    | 8,000    | 10,000   | 12,000   |
| <b>Pickup</b>            | From airport to school/person         | 1,200      | 1,200   | 1,200    | 1,200    | 1,200    | 1,200    |
| <b>Deposit</b>           | Friday of the check-out week          | 3,000      | 3,000   | 3,000    | 3,000    | 3,000    | 3,000    |
| <b>Total</b>             |                                       | 14,800     | 21,840  | 33,650   | 39,990   | 46,330   | 52,670   |

\* Electricity Bill: If monthly usage exceeds 80kW, the extra charges will be split evenly among roommates. (Students staying for more than 4 weeks will reconcile the electricity bill every 4 weeks and will be charged additional fees if necessary.)

\* Laundry: Laundry will be collected twice a week, on Mondays and Thursdays.

If it exceeds 2kg per collection, there will be a fee of 50 pesos per kg.

\* Books: The cost of books ranges between 200 and 800 pesos, depending on the student's specific course and elective subjects.

\* Pick-up is optional for students. It's charged per student.

\* In case of ID loss or course extension resulting in changes, an additional 200 pesos is required for reissuance.

\* Deposit: Paid upon check-in and refunded upon completion of studies.

\* All amounts are to be paid in full after orientation.



# Our service



## Airport Pickup Service

Avon offers a complimentary pickup service from the airport for students who provide their flight information up to 2 weeks prior to arriving in the Philippines. This service aims to reduce unnecessary stress and anxiety for students during their travels, and to ensure safe transportation to the school.



## Buffet-style Meals

To cater to the discerning palate of our students, Avon offers three daily meals served in a scrumptious buffet-style. We offer an exquisite and diverse menu, filled with delectable and healthy options to keep students energized throughout the day.



## Laundry Service

As part of our commitment to providing unparalleled convenience to our students, Avon offers a complimentary laundry service for their clothing needs. Students can avail themselves of this service twice a week, with a generous allowance of up to 2kg per load at no extra charge.



## Safety365

One of Avon's top priorities is the safety of their students. Security personnel are stationed within and around the school premises 24/7 to ensure students' safety and well-being at all times.



## Stair(way to Heaven) Cafe

Avon's open-style cafe is a delightful venue where students can purchase and enjoy coffee, pastries, and snacks. The cafe operates daily from 8:00 AM to 10:00 PM, providing students with an inviting and relaxing ambiance that is second to none.



## Care365

Avon's team of dedicated staff is always available on campus to provide personalized care and support to our students. Our staff can assist with dormitory-related issues, medical needs, and package collection, ensuring that students receive the utmost care and attention.



## This information is intended for those preparing for a study program



1. It is highly advisable to store round-trip flight tickets, traveler's insurance, and a COVID-19 vaccination certificate on your mobile phone.

2. As the Philippines is warm throughout the year, we recommend wearing cool and comfortable clothing. It is prudent to bring a jacket to guard against the possibility of catching a cold from air conditioning. Additionally, please remember to pack swimwear to take full advantage of the beautiful beaches in Cebu.



3. It is recommended to bring necessary medications if you have any pre-existing medical conditions. Over-the-counter medication is readily available in the Philippines.

4. Necessary items to bring include a hat, toothbrush, toothpaste, shower gel, shampoo, towels, water bottle, pen, notebook, etc.



5. The Philippine peso is used in the Philippines, but foreign currency exchange is easily accessible. Currently, 1 Philippine peso is equivalent to 0.018 USD.

6. While the school provides the best Wi-Fi service, internet speed in the Philippines is infamously slow. To use the internet outside of school, you may purchase a SIM card from Globe or Smart telecommunications companies. The cost of a SIM card is around 50 pesos, and monthly fees are about 400 pesos.



7. Cebu is a hot and humid city all year round, with rainy season from June to December and dry season from January to May.

8. There is a one-hour time difference between the Philippines and Korea.



9. Common modes of transportation in the Philippines include jeepneys, tricycles, buses, and taxis. Jeepneys are a convenient mode of transportation at a very affordable price of 8-20 pesos, but when traveling via public transportation, you should be vigilant about safeguarding personal belongings.

10. The Philippines is a country in Southeast Asia with rice as the staple food of its citizens. Popular Filipino dishes worldwide include Lechon or Roasted Pork, Sisig, and Sinigang. Korean, Japanese, and Western-style restaurants are also popular in the country.



11. The Philippines is a cultural melting pot where East and West meet. In particular, Cebu has been greatly influenced by Spanish and Roman Catholic cultures and is an important cultural hub in the Philippines. Cebu has many centuries-old churches and unique ancient architectural structures that attract visitors' attention.

12. There are more than 170 distinct dialects in the Philippines, with Tagalog and Cebuano being the most widely spoken languages. Additionally, English is the second language of the Philippines and is widely used in the country's educational system, government agencies, and media.





# School Regulations

## General Regulations

1. The use and importation of illicit drugs, including alcohol, narcotics, weapons such as knives, guns, swords, explosives, and other harmful substances, are strictly prohibited within the school premises.
2. Theft, property damage, racial discrimination, violence, and all other forms of misconduct are strictly prohibited.
3. Individual differences should be respected, and personal issues, conversations, or inquiries should be avoided.
4. Visitors, including friends, relatives, or guests, are not permitted on campus.
5. In case of losing the dormitory key, students must immediately inform the responsible personnel and follow the procedures provided by the school.
6. Students are prohibited to take any tableware outside of the premises of the school cafeteria.
7. The use and importation of electrical appliances in classrooms are strictly prohibited, and students will be held liable for any fire or explosion.
8. Students must strictly adhere to the class schedule to prevent disruptions to the teacher and classmates.
9. Students must consistently demonstrate respect towards their instructors and classmates and comply with their instructions.
10. Smoking is only allowed in designated areas, and a predetermined fine will be imposed for smoking outside of those areas.
11. Students are not permitted to move or alter furniture or equipment in the dormitory.
12. Students must obtain prior consent from the school before changing their assigned rooms.
13. Inviting friends to the room or visiting others' rooms, regardless of gender, is strictly prohibited.
14. Students are responsible for safeguarding their personal property.
15. From 10 p.m. to midnight, students must not leave their rooms or make noise.
16. During regular class hours, students are not authorized to leave the campus except for emergencies or valid reasons, such as hospital visits.
17. Students are not permitted to leave the school building from midnight to 6 a.m., which is considered curfew hours.
18. Students must complete the daily vocabulary test and return to the school before the midnight curfew time. Failure to do so will result in restricted after-school outings.
19. Students may stay out overnight on Fridays, Saturdays, and the day before a public holiday if they have no classes the next day. However, they must submit a travel request form before leaving and take full responsibility for any incidents that may occur outside the school. The travel request form must be submitted to the responsible person by 5 p.m. on Friday (or the day before a public holiday). If a student submits a travel request form, they must comply with the curfew hours and return to the school between midnight and 6 a.m. the following day.
20. Activities within hazardous areas such as the entrance gate, fences, balconies, rooftops, and the like is strictly prohibited.
21. In the event of a suspected infectious disease such as COVID-19, chickenpox, or measles, immediate quarantine measures must be taken.
22. The school reserves the right to notify parents and study abroad agent companies of the student's learning situation if deemed necessary.
23. The school regularly conducts inspections to ensure the safety of all areas on campus and may take photos or videos for evidence collection if violations are detected.
24. Students must abide by Philippine law.
25. The cafeteria provides buffet-style meals to ensure students consume sufficient food. However, a prescribed fine will be imposed if more than 300g of food is uneaten.

## Special Regulations

1. Students who are absent for more than 20% of the class time will not be eligible to receive a certificate of completion.
2. Students who are absent for more than 50% of the class time will be expelled without a refund.
3. Students who need to be isolated due to infectious diseases such as conjunctivitis or chickenpox will not be marked absent by the school.

## Rules for Changing Classes

1. Students may change their class schedule if they have a valid reason.
2. Once a student's schedule has been changed, they cannot return to their previous class or teacher.
3. If a student wishes to make changes to their schedule, they must apply to the school. Once the school makes a decision, the revised class schedule will be posted and implemented from the following Monday.



## Course Change Rules

1. Students may request a change of course.
2. To make a request to the faculty, students must complete and submit a course change application within working hours.
3. If the tuition fee for the new course is higher than the previous one, the student must pay the difference. However, if the difference is lower, no refund will be provided.

## Registration, Refund, and Cancellation Regulations

1. Tuition fees are non-refundable after the issuance of the admission invitation or invoice.
2. Tuition fees must be paid in full four weeks prior to the admission date.
3. Changing the admission date is allowed once up to four weeks prior to the admission date, and a fee of 100 USD will be charged.

### ★Course cancellation before registration

- Four weeks before the admission date: 100% refund of the tuition and dormitory fees, excluding the registration fee.
- Three weeks before the admission date: 90% refund of the tuition and dormitory fees, excluding the registration fee.
- Two weeks before the admission date: 80% refund of the tuition and dormitory fees, excluding the registration fee.

### ★Course cancellation after registration

- In case a student completes 25% or less of the entire course, they shall receive a refund of 60% of the tuition and accommodation fees.
- If a student has completed over 25% but less than 50% of the entire program, they will be eligible for a 50% refund of the tuition and dormitory fees.
- In case the student completes 50% or more of the entire course, tuition and dormitory fees will not be refunded. Please note that the school calculates on a weekly basis and will not refund the remaining costs.

*The school operates on a weekly settlement basis and does not provide refunds for any remaining fees.*

- No refunds of the tuition fee will be given if the cancellation occurs within four weeks of registration.
- Local costs will be fully refunded from the time the student leaves the school.
- Students who change their course are not eligible for a refund of the price difference between the two courses.

## Refund and Expulsion Policy

1. Any violation of school regulations or acts that are detrimental to staff members will result in expulsion without refund.
2. Spreading false information, defamation, lying, destruction of other students' property, and behaviors that affect the school's reputation or cause complaints from other students may result in expulsion.
3. Fighting, violence, gambling, and betting among school staff, teachers, and students are grounds for expulsion.
4. Use of prohibited substances or engaging in sexual activities within the school premises is strictly prohibited.
5. Students who violate school rules more than twice will be expelled without refund.

## Laundry Policy

1. The school provides free laundry service twice a week per student for up to 2 kg of clothes per load. Any weight exceeding the limit will be subject to an additional fee according to the guidelines provided.
2. Bed sheets are changed every two weeks, and there is an additional fee of 200 pesos each time.
3. If laundry is not cleaned properly, the relevant item must be compensated for. (e.g. during menstruation or when ink is on bed sheets)

## Rules for Dormitory Cleaning

1. The school has a weekly schedule for cleaning the rooms.
2. The cleaning staff does not clean students' personal lockers and desks.
3. If a student wishes to change their bed sheets earlier than scheduled or if they have any special requests, they should inform the cleaning staff.
4. Students are responsible for managing their personal belongings.

## Philippine Holidays and Class Suspension

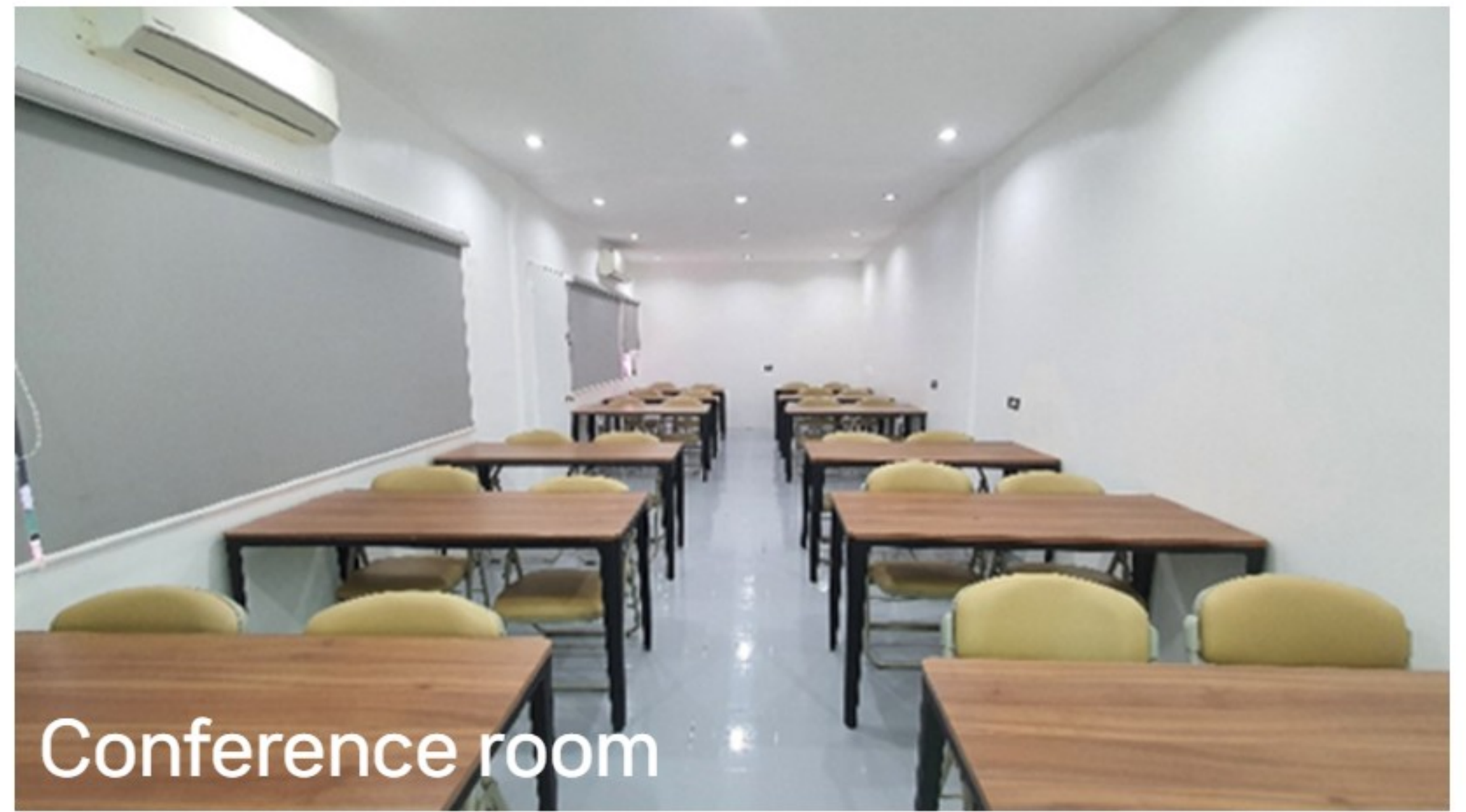
1. Philippine government holidays are observed by the school.
2. There will be no regular classes or make-up classes on these days.



# Our school



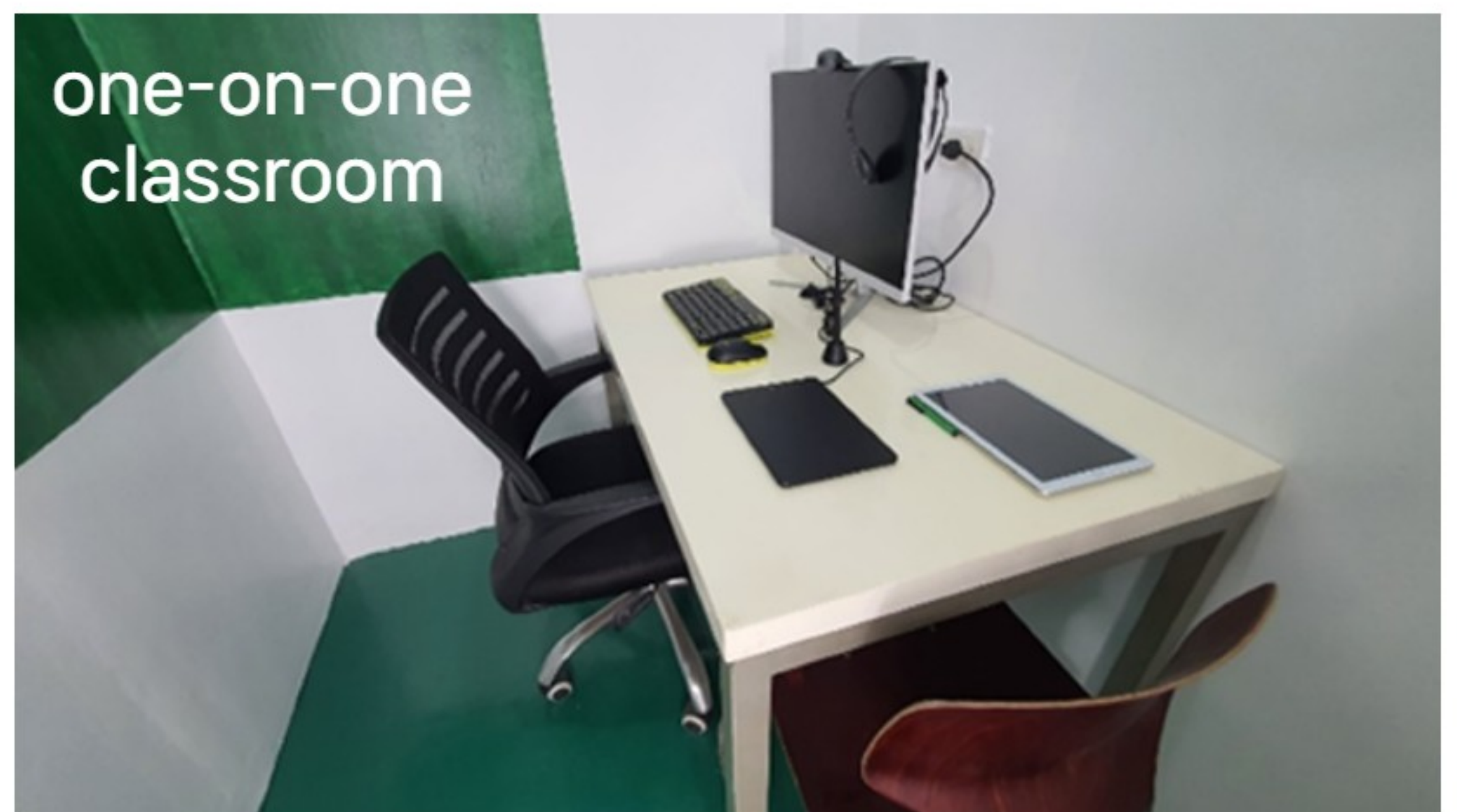
Open cafe



Conference room



Dormitory



one-on-one  
classroom



Cafeteria



one-on-one  
class



Gate



## CONTACT US

Adress:  
Maroo Building, 888  
Paseo Saturnino, Cebu  
City, Cebu, 6000

Our Websites:  
[cebuavon.com](http://cebuavon.com)

By email:  
[cebuavon@gmail.com](mailto:cebuavon@gmail.com)

By telephone:  
Cebu: +63-32 340 4920

