

# LSLC

LANGUAGE SKILLS LEARNING CENTER



[www.usls.edu.ph](http://www.usls.edu.ph) [www.lslc.info](http://www.lslc.info)





# Greetings of Peace!

Greetings from the University of St. La Salle (USLS)! Nelson Mandela once said: "If you talk to a man in a language he understands, that goes to his head. If you talk to him in his own language, that goes to his heart." Indeed, learning a language does not only bridge understanding among people, but also brings us together in the spirit of brotherhood. The De La Salle Brothers and the entire Lasallian community at USLS, warmly welcome all students from our partner schools who desire to enhance their English language skills, experience the uniqueness of Philippine culture and take a step forward in shaping an international culture of understanding. Since 1999, USLS has been providing global education and cross-culture experiences to all young men and women like you. In view of sharing Lasallian education in the tradition of excellence, we have extended this invitation to all countries in the Asian region and to the international community. We invite you to be part of this unique exciting journey at the La Salle Language Center in Bacolod City, Philippines. May you be the spark that will ignite the light that shines on the path to making our world a better place! Animo La Salle!

Br. Joaquin S. Martinez FSC, D.Min  
President and Chancellor



## | CONTENTS |

- University of St. La Salle, ----- 01
- History of LSLC ----- 03
- Advantage of LSLC ----- 04
- Timetable of LSLC ----- 05
- Daily Schedule of LSLC ----- 06
- Program
- ESL ----- 07
- TOEIC ----- 08
- TOEFL ----- 09
- IELTS ----- 10
- BUSINESS ENGLISH ----- 11
- OPTION / SPECIAL ----- 12
- Dormitory ----- 13
- Total Management System ----- 14
- Bacolod ----- 15
- LSLC Activities ----- 16
- Policy ----- 17
- Check list ----- 18

Location	Main Campus Lasalle Ave. Bacolod City Negros Occidental Philippines
Established	1952
Undergraduates	approximately 13,000
Administrative staff	approximately 600
Motto	Religion, Morals, Culture
Affiliation	DLSP(Roman Catholic)
President	Br. Joaquin S. Martinez FSC, D.Min
Mascot	Bee
Campus	100,000m <sup>2</sup>
Website	<a href="http://www.uslc.edu.ph">http://www.uslc.edu.ph</a>
Affiliated organ	High School, Elementary School, Kindergarten
University Facilities	Swimming Pool, Football Field, Library, Cafeteria, Internet Room, Store
Language Center (LSLC)	1-on-1 Lecture Rooms, 1-on-6 Group Classrooms,
LSLC Faculty & Staff	approximately 200

USLS Health Science Campus Lacson St. Bacolod City  
Granada Campus Brgy Granada Bacolod City





# University of St. La Salle

La Salle – Bacolod opened in 1952 almost 41 years after the La Salle Brothers came to the Philippines to establish their first school in Manila.

Today 70 years after it first opened in Bacolod, the University of St. La Salle has a population of around 13,000 students in the College and Graduate school, and about 2300 students in the Integrated School. The Undergraduate Program includes seven Colleges-Arts and Sciences, Business and Accountancy, Engineering, Education, Nursing, Law, and the newly opened College of Medicine. The University was recently granted Full Autonomy Status, a recognition given by the Commission on Higher Education to only thirty premier private tertiary institutions in the country today. This recognition was based on the University's performance in the Licensure Examinations, its accreditation status, as well as its declaration as a Center for Development in two areas-Engineering and Business and management Education.

University of St. La Salle has produced top-notchers in Accountancy (21 Top 20 Placers since 1973), Law (7th Placer), Education, Nursing, Electronics and Communications Engineering (Two First Placers), and Chemical Engineering in May 2002 the published results for the Accountancy Licensure Examinations, ranked the University's program as Number One nationwide in its category of 10-25 examinees.

## Undergraduate course

### COLLEGE OF ARTS AND SCIENCES

- ◆ Bachelor of Arts in Communication
- ◆ Bachelor of Arts in Interdisciplinary Studies
- ◆ Bachelor of Arts in Political Science
- ◆ Bachelor of Arts in Psychology
- ◆ Bachelor of Science in Biology
- ◆ Bachelor of Science in Psychology

### COLLEGE OF BUSINESS AND ACCOUNTANCY

- ◆ Bachelor of Science in Accountancy
- ◆ Bachelor of Science in Accounting Information System
- ◆ Bachelor of Science in Management Accounting
- ◆ Bachelor of Science in Agribusiness
- ◆ Bachelor of Science in Entrepreneurship
- ◆ Bachelor of Science in Hospitality management
- ◆ Bachelor of Science in Tourism Management
- ◆ Bachelor of Science in Business Administration
  - ◆ Major in Business Economics
  - ◆ Major in Marketing management
  - ◆ Major in Marketing Management with Certificate in Entrepreneurship
  - ◆ Major in Major in Operations Management
  - ◆ Major in Major in Operations Management with Certificate in Human Resource management

### COLLEGE OF EDUCATION

- ◆ Bachelor of Elementary Education
- ◆ Bachelor of Early childhood Education
- ◆ Bachelor of Special Needs Education with Specialization in Early Childhood
- ◆ Bachelor of Secondary Education Major in English
- ◆ Bachelor of Secondary Education Major in Mathematics
- ◆ Bachelor of Secondary Education Major in Science
- ◆ Bachelor of Secondary Education Major in Social Studies
- ◆ Bachelor of Physical Education

### COLLEGE OF ENGINEERING AND TECHNOLOGY

- ◆ Bachelor of Science in Chemical Engineering
- ◆ Bachelor of Science in Computer Engineering
- ◆ Bachelor of Science in Electrical Engineering
- ◆ Bachelor of Science in Electronics Engineering
- ◆ Bachelor of Science in Materials Engineering
- ◆ Bachelor of Science in computer Science
- ◆ Bachelor of Science in Information Technology
- ◆ Bachelor of Science in Food Technology
- ◆ Bachelor of Science in entertainment and Multimedia Computing

### COLLEGE OF NURSING

- ◆ Bachelor of Science in Nursing



# LSLC HISTORY



**1997**

Jun - LSLC signed an MOU with Daegu Catholic University, Korea.

**1999**

Jun - A contract was signed in the LSLC representative office.



**2009**

Jun - LSLC signed an MOU with Gachon University, Korea.  
 Oct - LSLC signed MOUs with Daegu/Luther/Kyungil Universities.

**2011**

May - LSLC signed an MOU with Kong Ju University, Korea.  
 Jun - To accommodate 250 students more, a groundbreaking ceremony of the new dormitory was held.  
 Jul - LSLC signed an MOU with Busan of Foreign Studies University, Korea.  
 Dec - LSLC signed an MOU with Keimyung University, Korea.

**2012**

Jan / May / Jul - LSLC signed MOUs with Sunchon National/Dong-A/Dong-Eui Universities, Korea.

**2010**

Apr - LSLC signed an MOU with Sun Moon University, Korea.

**2013**

Jan / May - LSLC signed MOUs with Kumoh/Pukyong Universities, Korea.  
 Sep - The new dormitory, accommodating 250 students, was completely built.

## What is LSLC ?



### Intensive 1-on-1 classes

Each student's ability and level of the four macro skills (listening, speaking, reading, writing) in learning a language, such as English, are honed in 1-on-1 classes. These are handled by skilled teachers individually. In these classes, organization of ideas could be monitored and enhanced with speaking and writing teachers through descriptions, daily conversations on issues and news, diaries, and others. Moreover, comprehension of ideas and differing English accents could be closely guided and developed with the listening and speaking teachers.



### Building and location

Fully air-conditioned, it has small classrooms for 1-on-1 classes and big rooms for group classes. Its location allows the LSLC students to mingle with the University of St. La Salle students, staff, and teachers. Also, it gives them opportunities to enjoy being with other students, local and international, and use the facilities such as, swimming pool, gym, Stinger's Food Court, soccer field, and others. To have an easy entry in the campus, our foreign students are provided with USLS Identification card.

### Conducive learning environment

Though the economy in Bacolod is growing, there are only few places of entertainment for our students to enjoy hanging out with friends. Thus, to focus more on enhancing their English skills is possible.



## 2001

Mar - The LSLC office was moved to Gangnam, Seoul, Korea

## 2002

Mar - The LSLC office was moved to Shinchon, Seoul, Korea.

## 2004

Jun - LSLC signed MOUs with Silla Universities, Korea.

## 2005

Mar - The LSLC office was moved to Jongro, Seoul, Korea.  
Apr - The Philippine office became a corporate company.  
A ground breaking ceremony for 74 (1: 1) classrooms, 10 (1: 4) classrooms, and 6 (1: 8) classrooms was held.  
Jun - The dormitory, with 6 single rooms, 45 double rooms, 11 triple rooms, and 4 quad rooms was built.  
Aug - LSLC signed an MOU with Daegu Haany University, Korea.

## 2007

Jan / Jul - LSLC signed MOUs with Ulsan and Sungduk Universities, Korea.  
May - The LSLC office was moved to Mokdong, Seoul, Korea.

## 2008

Mar - LSLC signed an MOU with Chonbuk National University, Korea.  
Dec - To accommodate 200 students, more classrooms and rooms were added in the dormitory.



## 2014

May / Jun / Jul / Oct - LSLC signed MOUs with Inje/Youngsan/Yeungnam/Tongmyong Universities, Korea.

## 2015

Jan / May / Sep / Oct / Nov - LSLC signed MOUs with Chungnam Provincial/Cheongyang/Kosin/Seonam/Kyungbuk/Kyungsung Universities, Korea.

## 2016

Apr - LSLC signed an MOU with Seowon University, Korea.  
May - LSLC signed an MOU with Mokwon University, Korea.

### Experienced, skilled, and professional teachers

Since 1997, LSLC has hired teachers who are efficient in teaching the English language and implementing its developed curriculum and program. All LSLC teachers are specifically assigned to teach a skill, like listening, speaking, reading, and writing. It professionally trains the teachers to encourage and hone students' confidence and English skills while keeping their own teaching styles and expertise. For years, the center has taught English to students who wish to learn both language and culture at the same time.



BUSINESS PERMIT



SEC



SSP-1



SSP-2



LETTER OF ACCEPTANCE



CERT OF PARTICIPATION -MNHS



CERT OF PARTICIPATION -TOURISM WEEK



CERT OF PARTICIPATION -JAEYONG OH



CERT OF PARTICIPATION -LSLC

### Classes in the University of St. La Salle - Bacolod

Any foreign student who is enrolled in LSLC can attend classes in the university in a real Philippines classroom setting for further exposure and experience of the culture and language. This can also be the best avenue for our foreign students to interact with other students in the campus. Thus, cross-cultural experience and friendship start.



### High satisfaction rate

Improved English skills, developed friendship, less pressure, and comfort are few of the reasons why our foreign students, who experienced studying English in LSLC, would either extend their stay or come back. If given a chance to be in the Philippines, LSLC comes to mind first.



### Inexpensive Cost

Since Bacolod is not a big city, tuition fee and cost of living are 20 to 30 percent lower than other cities, like Cebu and Manila. Luxurious hotels, resorts, and shops offer excellent services at low cost. Moreover, our foreign students can enjoy eating delicious food and delicacies at very reasonable prices.





# LSLC Timetable

## Beginning



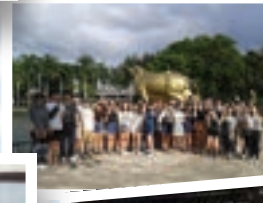
Bacolod-Silay airport pick-up



level tests, interview, and orientation



arrival in the dormitory, ID registration



campus and city tours in Bacolod

### OVERALL TIMETABLE

wake up, eat breakfast & go to school



07:00

08:00

regular classes  
in the morning

12:00

13:00



lunch break

17:00

regular classes  
in the afternoon

1: 1 lessons

1: 6 group lessons



Students interact with their instructors, do some book exercises, take quizzes, and others.



Extracurricular activities

Special language classes

Buddy Program

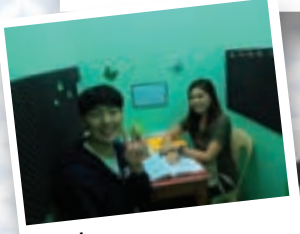
# LS Daily



## School life



ESL, TOEIC, TOEFL, IELTS



1:1 class

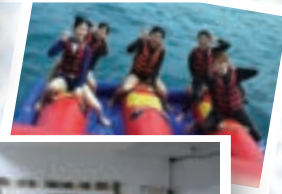


1:6 group class

## Activities



volunteer activity & tourism

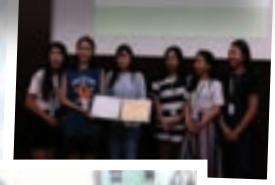


various events

## Ending



final examination & Recognition Rites



# LC Life

## Weekends & Holidays

22:00

Daily curfew

20:00

19:00

18:00

Dinner



Free time



Vocabulary



Resort



Volunteer work



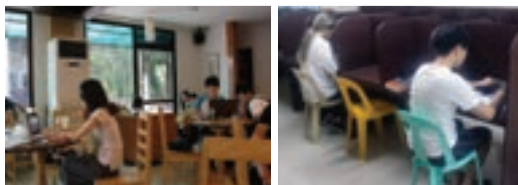
Enjoy hobbies



Field trip



Option classes & Self study





The ESL program at LSLC is offered in Regular and semi-Sparta intensive courses. Each course focuses on the four English skills : Reading, Writing, Speaking and Listening. Also, it includes Debate, Dictation, Vocabulary and more.

Classes start : every Monday  
 Minimum time frame : at least 2 weeks  
 Number of hours : Regular Course 38 hours per week  
                           - 30 hours (1 on 1 & group classes) + 8 hours (option classes)  
                           Intensive Course 51 hours per week  
                           - 35 hours (1 on 1 and group classes) + 4 hours (option classes) + 12 hours (vocabulary)



1 on 1 Class

This course is ideal for beginners and intermediate English language students. It focuses on enhancing the four macro-skills of the English learners, namely, listening, speaking, reading, and writing. It helps developing sophisticated English conversation skills for the advanced English speakers.



Group Class(6 in 1)

The small group classes are conducted by a group of professional instructors who are trained to improve the students' confidence in the English language in various ways. The classes are grouped according to the result of the students' entrance English tests.

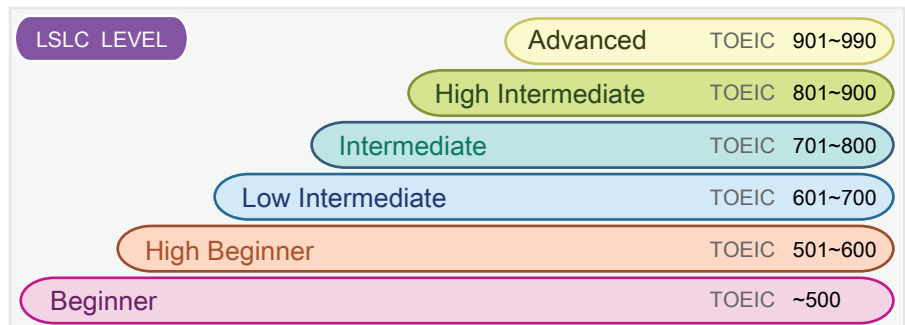
Level 1	Level 2	Level 3	Level 4	Level 5	Level 6
Beginner	High Beginner	Low Intermediate	Intermediate	High Intermediate	Advanced

► Curriculum

Class	Subject		Test
1:1	1:1 4 hours	1:1 5 hours	Level ▼ Monthly ▼ TOEIC & Interview
	Reading, Writing, Listening, Speaking		
Group	Grammar ,Culture Shock, Dating, Hobbies, Personal Background, Lifestyle Conversational, Presentation, Job Interview, Asking and Giving Direction, Role-playing, Effective Communication		
Option	① 17:00 ~ 18:00 ② 19:00 ~ 20:00	TOEIC, American Culture and Accent, Vocabulary, Discussion, CNN	

► Timetable

Time	Regular Course		Intensive Course	
08:00~08:50	Reading	1:1	Reading	1:1
09:00~09:50	Writing	1:1	Writing	1:1
10:00~10:50	Speaking	1:1	Speaking	1:1
11:00~11:50	Listening	1:1	Listening	1:1
13:00~13:50			Speaking	1:1
14:00~14:50	Effective Communication	Group		
15:00~15:50	Dictation	Group	Effective Communication	Group
16:00~16:50			Dictation	Group
17:00~17:50	Option	Group	Option	Group
19:00~19:50	Option	Group	Option	Group







At LSLC, the TOEIC program is taught part-by-part by the TOEIC instructors. It aims to improve the TOEIC score of every learner.

- Classes start : every Monday
- Minimum time frame : at least 4 weeks
- Number of hours : 46 hours per week
  - 30 hours (1 on 1 & group classes) + 16 hours (option classes)



The TOEIC training course is handled by experienced and skilled instructors who are specifically trained to teach TOEIC.

Is TOEIC simple?  
It builds a way to improve TOEIC score and English speaking ability.

What comes after TOEIC?!  
A curriculum is designed to build the foundation for the preparation of other English language examinations with increased confidence in the English test.



Beginner	Intermediate	Advanced
TOEIC score of 200 - 450	TOEIC score of 450 - 700	TOEIC score of 700 - 850

► Curriculum

Level	Contents	Target Students	The Goals
Beginner	LC -Basic listening Comprehension -Basic phrases and patterns RC-Basic grammar -Basic reading -Basic vocabulary	-Students start studying TOEIC. -Students lack understanding of TOEIC. -Students have difficulties with the analysis of various text	To achieve a score of 600
Intermediate	LC -Intermediate listening -Intermediate phrases and patterns -Solving sample questions RC-Intermediate grammar -Intermediate reading -Intermediate vocabulary	-Students have basic knowledge of grammar, but less confident in solving questions. -Students have difficulties in solving a bit difficult questions. -Students can solve the simple questions easily, but have to be familiar with complex questions.	To achieve a score of 600
Advanced	LC -Advanced listening -Advanced phrases and patterns -Reviewing sample questions from previously taken TOEIC tests RC-Advanced grammar -Advanced reading -Advanced vocabulary	-Students have confidence on listening but have difficulties in dealing with complex vocabularies and expressions.	To achieve a score of 600

► Timetable

Time	TOEIC	
08:00 ~ 08:50	TOEIC Speaking	1:1
09:00 ~ 09:50	TOEIC Reading	1:1
10:00 ~ 10:50	TOEIC Listening	1:1
11:00 ~ 11:50	TOEIC Speaking	1:1
14:00 ~ 14:50	TOEIC Grammar	Group
15:00 ~ 15:50	TOEIC Grammar	Group
17:00 ~ 17:50	Option	Group
19:00 ~ 19:50	Option	Group





At LSLC, TOEFL is handled by trained professional instructors who use a variety of topics which could develop the students' vocabulary and skills in understanding various situations and problems. Thus, it fully equips the students for future tests.

- Classes start : every Monday
- Minimum time frame : at least 4 weeks
- Number of hours : 46 hours per week
  - 30 hours (1 on 1 & group classes) + 16 hours (option classes)



**Practical iBT training**

- An intensive training using the latest type of exam is possible.
- Going beyond the basic level can be possibly achieved.
- It cultivates the ability to practically adapt to the exam.

**It has focused analysis on dealing with incorrect answers**

- It contains a summary of incorrect answers, for better perspectives.
- It has accurate diagnosis and feedback.
- It has 1:1 mentoring system.

**It has model answers and vast commentaries.**

- It deals with the essential grammatical structure.
- It involves a systematic guide on solving problems.
- It highly transforms basic ideas into great ones.

**Vibrant experience at LSLC**

- You can experience a systematic and precise system.
- You can have the core material summary.
- You can have an efficient management of study time.

Beginner	Intermediate	Advanced
TOEFL iBT score of 0 - 50	TOEFL iBT score of 50 - 75	TOEFL iBT score of 75 - 90

► Curriculum

Contents	Level	Target Students	The Goals
TOEFL Writing TOEFL Listening TOEFL Reading TOEFL Speaking	Beginner	-Students need to have TOEFL score, but lack the basic knowledge and skills.	-To achieve a TOEFL iBT score of 60 -To strengthen the basic knowledge of TOEFL in its regular classes -To study the basic vocabulary and academic phrases -To study basic listening skills of various lectures and conversations in English
grammar and vocabulary Solving sample questions from TOEFL tests	Intermediate	-Students want to be an exchange student in America. -Students have poor reading skills, especially reading English textbooks.	-To achieve a TOEFL iBT score of 80 -To acquire basic knowledge in the academic area through listening and reading -To perfect the score in listening and reading parts
	Advanced	-Students want to study or get a job in America. -Students want to have the highest TOEFL score. -Students want to speak English fluently and enroll in English courses.	-To achieve a TOEFL iBT score of 100~110 -To master speaking and writing parts -To maximize the ability to solve TOEFL questions

► Timetable

Time	TOEFL	
08:00 ~ 08:50	TOEFL Speaking	1:1
09:00 ~ 09:50	TOEFL Reading	1:1
10:00 ~ 10:50	TOEFL Listening	1:1
11:00 ~ 11:50	TOEFL Writing	1:1
14:00 ~ 14:50	TOEFL Grammar	Group
15:00 ~ 15:50	TOEFL Grammar	Group
17:00 ~ 17:50	Option	Group
19:00 ~ 19:50	Option	Group







At LSLC, IELTS course is specially administered by trained IELTS instructors. It helps students' studies, immigration and overseas employment, by focusing on the enhancement and integration of the listening, speaking, reading, and writing skills.

- Classes start : every Monday
- Minimum time frame : at least 4 weeks
- Number of hours : 46 hours per week
  - 30 hours (1 on 1 & group classes) + 16 hours (option classes)



**Writing (6.0)**  
A student can cultivate accurate information transmission ability by using correct grammatical structures in essay writing.

**Listening (7.5)**  
A student can listen to English news and acquires other habits which are useful in dealing with frequently encountered situations in everyday life.

**Reading (6.5)**  
A student can comprehend in reading the current issues and articles. A student advances his/her reading skills, especially in reading with the details and information, through the help of the professional instructors.

**Speaking (7.0)**  
A student can practice to convey his/her deep thoughts on various topics and current issues.

Beginner	Intermediate	Advanced
IELTS score of 1.0 - 4.0	IELTS score of 4.0 - 5.0	IELTS score of 5.0 - 6.0

► Curriculum

Contents	Level	Target Students	The Goals
IELTS Writing IELTS Listening IELTS Reading IELTS Speaking	Beginner	-The students are interested to study IELTS. -The students have limited knowledge of the English language.	-To achieve the IELTS score of 5.0. -To write short texts using correct grammatical structures and vocabulary words. -To learn pronunciation, intonation and accent in preparation for the speaking test. -To be familiar with British accent and pronunciation.
Practicing Pronunciation, Intonation, Stress & Blending Solving sample questions from sample IELTS tests	Intermediate	-The students have the difficulty in dealing complex reading and listening structures. -The students want to study or emigrate to Australia and New Zealand. -The students need to have a score of 6.0 or more.	-To achieve the IELTS score of 6.0. -To acquire basic knowledge in the academic area through listening and reading -To perfect the score in listening and reading parts
	Advanced	-The students want to have IELTS score of 7.0. -The students want to understand the most difficult vocabulary words and texts. -The students want to enroll in a medical school or get a nursing job in America	-To achieve the IELTS score of 8.0. -To master speaking and writing parts -To maximize the ability to solve TOEFL questions

► Timetable

Time	IELTS	
08:00 ~ 08:50	IELTS Speaking	1:1
09:00 ~ 09:50	IELTS Reading	1:1
10:00 ~ 10:50	IELTS Listening	1:1
11:00 ~ 11:50	IELTS Writing	1:1
14:00 ~ 14:50	IELTS Grammar	Group
15:00 ~ 15:50	IELTS Grammar	Group
17:00 ~ 17:50	Option	Group
19:00 ~ 19:50	Option	Group



# Business English

At LSLC, BUSINESS ENGLISH is offered as regular and optional classes. It maximizes the learners' skills needed in cultivating various fields through vocabulary building, doing exercises, and applying the lessons in the real life situations.

Classes start : every Monday  
 Minimum time frame : at least 4 weeks  
 Number of hours : 46 hours per week  
 - 30 hours (1 on 1 & group classes) + 16 hours (option classes)



**Experience realistic interviews:**

Experience vivid and rich interviews in English with local businessmen and enhance good business English skills and professional business background.

**Master business expressions:**

Concentrate on basic daily conversation patterns and idiomatic expressions, useful in a real business environment

**Maximize office-based learning:**

Learn professional English skills in business meetings, discussions, negotiations, interviews, and others.

**Do business trip/ travel:**

Learn English expressions applicable for various business situations or travelling activities in hotels, restaurants, shopping, and bars.

**Learn business English with a professional teacher:**

Learn complex expressions and structures through thorough association of concepts and interactive guidance.



Level 1	Level 2	Level 3
Beginner	Intermediate	Advanced

► Curriculum

Contents	Level	Target Students	The Goals
Business Writing	Beginner	-Students need to use the English language at the work place. -Students can converse in English, but have difficulty on doing it in any business situations. -Students want to have an internship abroad.	-To study basic business expressions, telephoning, writing e-mails, and writing resume -To acquire basic knowledge on international business environment
Business Listening			
Business Reading			
Business Speaking	Intermediate	-Students want to master their business English skills. -Students have a goal to get a job at a foreign company or abroad. -Students work with foreigners. -Students study formal English.	-To expose oneself in various business English situations, in preparation for the actual business environment -To be able to handle business meetings in English -To take business calls, attend business conferences, and write business letters and emails in the English language
Pronunciation, Intonation, Stress and Blending			
Business English situations/ circumstances	Advanced	-Students need to attend many business meetings and presentations. -Students want to advance their business expressions. -Students want to study business English for a specific industry or market.	-To enhance abilities in dealing with various international business environments -To be fluent and efficient in using the English language in business meetings, presentations, and others. -To express one's opinion like a native English speaker

► Timetable

Time	Business English	
08:00 ~ 08:50	Business Speaking	1:1
09:00 ~ 09:50	Business Reading	1:1
10:00 ~ 10:50	Business Listening	1:1
11:00 ~ 11:50	Business Writing	1:1
14:00 ~ 14:50	Business Situations	Group
15:00 ~ 15:50	Business Presentation	Group
17:00 ~ 17:50	Option	Group
19:00 ~ 19:50	Option	Group



# Option Class

In addition to daily regular classes, LSLC offers a variety of optional lessons from Monday to Thursday for the interested English learners who wish to wisely spend their time right after their regular classes.

Schedule : Mon~Thu(5~6pm, 7~8pm, 7~10pm)  
Number of hours : 20 hours per week



## ● CNN class

This class is designed for students whose level is higher or lower than the upper level. It is a class where students can watch and listen to the latest global trends and current affairs through various CNN News, while learning popular and current English expressions.



## ● TOEIC LC, RC, Speaking

With an instructor, TOEIC LC, RC, and Speaking classes are intensively taught and discussed to benefit the students in preparation for the TOEIC test.

## ● ACA & V class

American Culture Accent and Vocabulary - they are intensive concentration courses for students to listen to and learn pattern sentences that are applied in everyday life among conversations extracted from the US cultural contents.



## ● IELTS

This is a course for those students who need an academic/general qualifications in studying abroad, immigration, and employment. It focuses on the English proficiency and achievement of the target score.



## ● VOCABULARY class (maximum 3 hours)

In this class, a vocabulary book is used to learn a set of vocabulary words, followed by individual self-study and completion of the final day-to-day test. In parallel with one-on-one regular classes, it can improve ones English level, in a short time.



## ● Discussion class

In the class, students can choose light issues or everyday topics and exchange views and opinions with each other. It is a class where students can explain some vocabulary words, express their thoughts, and persuade others.

# Special Program

- ◇ Special programs are only available to applicants.
- ◇ Upon the completion of a program, the student volunteer receives a Certificate of Appreciation.

## ▶ Language Sharing

Any LSLC student can share or teach his/her own language and culture (e.g. Korean, Japanese, Chinese) to the students of University of St. La Salle - Bacolod for free. The class runs for 90 minutes and is given twice a week.



## ▼ Buddy Program

LSLC students meet USLS students and spend time interacting about culture, like, visiting a house, cooking food, playing sports, joining events and activities, and more. Through this program, our students use English and experience exchanging cultures with the Filipinos.



## ▼ Habitat

The City of Bacolod has a love building project. It is a program that can help alleviate people who are suffering from the poor housing environment in the local slums. At the completion of the project, a certificate of volunteer activity is issued.



## ▶ Visiting an orphanage

LSLC students, after language sharing, visit a local orphanage to voluntarily serve, clean, give gifts and play with the less fortunate kids.



## ◀ Mangrove planting

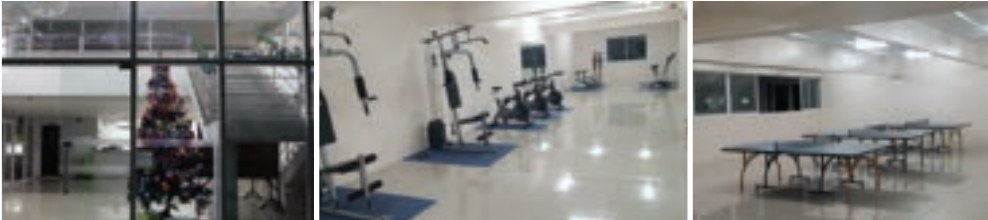
It is an environmental protection program which gives importance on planting mangrove, a water purifier plant. It expands students' understanding about the nature and the environment.



# LSLC "All New Dormitory"



In 2015, a clean and convenient new dormitory was opened.



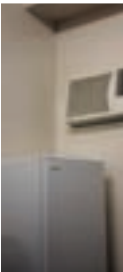
- ▶ On foot, it is just 5 minutes away from University of St. La Salle.
- ▶ It serves a diet of healthy and fresh ingredients, three times a day, all year round.
- ▶ It has regular hotel-style care system.
- ▶ It has an on-site gym, table tennis, and a convenience store.



Single	7 rooms	It can accommodate 250 students at once
Twin	18 rooms	
Triple	69 rooms	

**Facilities** resident office, reception area, convenient store, laundry area, internet, study room, students' lounge, cafeteria, recreation area (table tennis, and mini gym), audio-visual room (AVR)

**Room Facilities** refrigerator, electric fan, hot and cold shower, lavatory, air-condition, sink, desk, study lamp, mirrors, bed, blanket, pillows, closet, hangers, chairs, and trash can





# “Total Management System”



## Academic Management!

- ▶ It supports teachers and does counseling, especially on the students' schedules. As a result, the students can concentrate on their studies only.
- ▶ Replacement of teachers
  - The best and suitable teacher is assigned to every student.
  - With proper reason, a student can possibly change a teacher, every week.
- ▶ Academic Support
  - Completion, Orientation, Examination
  - Welcome party, farewell party etc.



**It operates with friendly service mindset!**

- ▶ A seminar is conducted regularly.
- ▶ Most of the employees have been in service for many years!
- ▶ Every one can help solve problems, like academic and personal.



## Safe LSLC life!

- ▶ It is equipped with a 24-hour security system.
- ▶ It is secured by the barangay police ( a resident autonomous police).
- ▶ It has regular night patrol, done by the LSLC security personnels.
- ▶ It has 24-hour CCTV monitoring.
- ▶ It has an ID and fingerprint machine.



## Healthy LSLC life!

- ▶ Three healthy meals are regularly served for 365 days.
- ▶ Thorough hygiene management and supervision are meticulously handled by the chief of the kitchen.
- ▶ A variety of food is provided.
- ▶ The table tennis and gym promote leisure and health to all the residents.



**Pleasant LSLC life!**

- ▶ Hotel style care service:
  1. Every room is cleaned 3 times a week.
  2. The bed sheet, pillow cover, and floor rugs are replaced twice a month.
  3. The laundry is collected twice a week.
- ▶ Regular dormitory sanitation



## LSLC benefits!

- ▶ A discount from E-CLIPSE GYM (Health, Golf, Fitness) can be availed!
- ▶ A discount from Khan Spa Massage can be enjoyed!

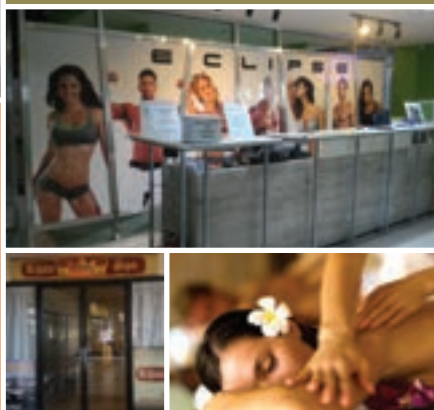
## Safe Living in LSLC!

- ▶ The Riverside Medical Center has precise consultation.
  - On foot, the Riverside Medical Center is 5 minutes away from the dormitory.
  - In Bacolod City, it has the best medical staff and medical facilities.



**The people at the front desk are friendly!**

- ▶ For the convenience of all students, the front desk opens from 6 AM to 12 PM, 365 days.
- ▶ It gives various information, keeps things, does the exchange of currencies, collects rent, calls the taxi, does reservation of a car for long distance travels, and others.







### A safe city

The Philippines has more than 7,000 islands. Among them, Negros Island, where Bacolod is on its northern part, is located in the center of the Philippines, where other islands serve as a natural geographical barriers. As a result, there are no natural disasters such as typhoons and tsunamis. The city constantly weathers throughout the year and the lives of the citizens are filled with abundance.

Bacolod is the capital city of Negros Occidental, northern part of the Negros Island - the fourth largest island in the Philippines. Since the beginning of the 20th century, its main industry, sugar production, along with modern sugar facilities, has been rapidly developing, becoming the largest sugar producing area in the Philippines. Historically, it was also the site of the Spanish garrison, before the domination of the United States. It also has an old stone church and a monastery in the central square. Lastly, it is a city where Catholic history is alive.



### City of Smiles

The smile symbolizes Bacolod! In the Philippines, Bacolod is known as the "CITY OF SMILE". The people of Bacolod, a city of traditional Catholic culture and a city of love, caring and abundant agriculture, always smile.



### City of cultural attractions

Bacolod is the home of the well-known Masskara Festival in the Philippines. It is also famous for celebrating Chinese New Year Festival, Panaad Festival and Mambukal mudpack festival. It is the home of the most famous tourist attractions, such as, St. Catherine's Cathedral, Santa Clara Cathedral, San Antonio Cathedral, Catholic heritage which has been preserved for hundreds of years from the Spanish colonial era, the Negros Museum and Dizon Ramos Museum.



### A livable city

In March 2017, it was chosen as number one among the ten best cities to live in the Philippines by the social media group, posted in Facebook and Youtube. Bacolod is a nationally planned city, boasting on its excellent residential environment and good road conditions, resulting in having a less traffic. Compared with big cities, it has clean air, clean streets and high quality of water. Thus, it is famous for its slogan "clean city".



### City of education

Bacolod has many universities, including UNO-R, Riverside College, STI West Negros University, CSA-B, as well as University of St. La Salle - a prestigious private university in the Philippines.

# ACTIVITIES

## Cultural Experience

Participants : Any interested student  
 Reservation : LSLC office or reception desk  
 Schedule: Check the bulletin board



**Philrice** farm and factory



**Pepsi** beverage company



**Merzci** confectionery factory



**OISKA** silkworm farm

To experience the unique blend of the Philippine culture, one can visit a rice farm and factory, a beverage company, a confectionery factory, a silkworm farm, and do various and memorable activities.



# ACTIVITIES

## Field trip

Iloilo

Bacolod

CEBU

NEGROS



### Various Events



Speech Contest



Reading Contest



Commemorative parties





# RULES

## [GENERAL RULES]

### 1. Introduction

The official name of the center is University of St. La Salle which is also known as Language Skills Learning Center (LSLC).

### 2. Objective

It is to enable students to have a safe and successful English language training at LSLC.

### 3. Registration

3.1 Registration fee is US \$100, which is non-refundable.

3.2 A student must register, pay tuition, and dormitory fees one week before departure. If he/she has arrived in the dormitory without paying the full amount, a student is expected to pay the balance, within a week after arrival (no full payment, no more classes).

### 4. Insurance

All students are obliged to secure an insurance (International Student Insurance) for the duration of the study period before going to the Philippines. When the study period is extended, the insurance must be personally extended as well. The LSLC will not be held responsible for accidents caused by personal actions during personal trips. During any LSLC official trips, LSLC will not be held responsible for a student who would have his/her own activities, aside from the official itinerary.

### 5. Staying out

LSLC students are allowed to travel/stay out over a night on weekends and holidays. To be allowed, they are required to fill out the Liability Waiver on a Wednesday, a week in advance. Any student who travels/stays out without the Liability Waiver will be penalized and will not be allowed to go for a week.

Note: Within Bacolod City, a student is only allowed to stay out and stay in the resort, not in the hotel.

### 6. Fingerprint scanner

All LSLC students must register their fingerprints upon entering the dormitory. They should always pass by the fingerprint scanner when entering or leaving the dormitory.

### 7. Extension of study period

Extension must be done one month before the last day of stay. He/she must pay the tuition and dormitory fees a week before the expiration date.

### 8. Refund policies

The refund policies apply when a student has

- ⓐ Cancelled the program before leaving his/her country : Full refund, except the registration fee \$100
- ⓑ Cancelled the program within 75% of the whole program : 50% refund
- ⓒ Cancelled the program after spending 75% of the program : No refund
- ⓓ Dismissed from the school : No refund

### 9. Penalty point system

For the students' safety and convenience, LSLC observes the following penalties. Once any of the regulations is violated, a student (violation) will be notified on the bulletin board and will be prohibited from going out for a week. Furthermore, habitual violation or excessive accumulation of penalty points could result to being expelled without any refund.

- ① Going in the dormitory on or after 12AM is considered sleeping out : 7 points
- ② Cooking food inside the dormitory : 7 points
- ③ Drinking liquor or keeping an empty bottle of liquor : 7 points
- ④ Going in the room of an opposite sex : 7 points
- ⑤ Visiting the casino : 7 points
- ⑥ Trying to climb/jump over the fence : 7 points
- ⑦ Giving accommodation and food to an outsider : 7 points
- ⑧ Coming back the dormitory beyond the scheduled curfew or before 12AM : 5 points
- ⑨ Smoking inside the room : 3 points
- ⑩ Not scanning his/her finger on the fingerprint scanner : 3 points
- ⑪ Making noise, disturbing others, and gambling inside the room : 3 points
- ⑫ Showing too much physical affection to a boyfriend/girlfriend : 3 points
- ⑬ Absence without notice : 3 points

8 weeks and below : 10 or more penalty points

8-16 weeks and below : 15 or more penalty points

16-24 weeks and below : 20 or more penalty points

Once a student is warned, he/she is not allowed to travel/stay out the dormitory for one week.

### 10. Situations which guarantee immediate dismissal without warning and refund

LSLC does guarantee immediate dismissal without refund to any student doing any of these situations

- ① Kicking the main gate or doing an act of disturbance/violence in order to enter the dormitory after curfew
- ② Damaging the facilities of the dormitory intentionally and maliciously
- ③ Making the environment less livable through assault and insult
- ④ Violating rules repeatedly or not paying attention to the warnings given by the staff
- ⑤ Sleeping in the room of the opposite sex  
( Note: Staying in another person's room for an hour is considered sleeping and a violation. )

## [School Regulations]

### 1. Class

1.1 A student who wishes to change his/her instructor is advised to inform the office every Thursdays only.

1.2 A student who has not attended any of his/her classes for any reason is not given make-up classes.

1.3 When a student is sick, he/she must write the details on the dormitory counter to be considered excused. If he/she fails to do it, his/her absence is unexcused.

1.4 A student who expects to have family/friend guests must inform the office a day before taking a leave of absence. If he/she fails to inform the office, a penalty is given.

1.5 A student must take the monthly level tests which are scheduled every last Friday of every month. If he/she can not take these tests, he/she could not enjoy the privilege of spending some time or going on a trip with his/her friends in a week.

1.6 Tuition is non- transferrable.

### 2. Holidays

A student cannot have any make-up class in replacement for any Philippine legal holidays. On the contrary, he/she is privileged to have make-up classes if the number of holidays affects 10% of his/her total class.

### 3. Certificate

LSLC students must reach 90% or beyond of attendance to receive a certificate. On the contrary, if a student has earned penalty points or expelled, he/she can not be given a certificate.

### 4. University of St. La Salle Rules

4.1 Since the University of St. La Salle is a catholic school, a student should not wear short pants, tattered jeans, mini-skirts, and sleeveless shirts in the school vicinity. 4.2 A student is not allowed to smoke inside the campus.

4.3 A student is not allowed to drink inside the campus.

4.4 Students are not allowed to show too much physical affection in the school.

4.5 Students should wear their ID in the campus.

## [Dormitory Regulations]

### 1. Curfew

① 10PM : Sunday – Thursday

② 11PM : Friday – Saturday ; a night before holidays

# At the gate of the dormitory, the students' entrance and exit are being checked through the ID holder, fingerprint scanner, and CCTV.

### 2. Meal

- The cafeteria serves three full meals every day.

- Meal time

weekdays : breakfast (7:00-8:30) lunch(11:40-13:00) dinner(5:40-7:00)

weekends and holidays: breakfast (7:30-9:00) lunch(12:00-13:00)

dinner (6:00-7:00)

### 3. Room cleaning and laundry

-Room cleaning: A student's room is being cleaned three (3) times a week.

-Laundry: A student's laundry is collected twice (2) a week.

# Bed sheet, pillow cover, and rug of the students are washed once (1) every two (2) weeks

# A student should not make the laundry department liable for the discoloration of the clothes or the prints. Thus, he/she should not expect any compensation.

### 4. Personal belonging

A student should prepare his/her own necessities such as tissue, towels, soap, toothpaste and toothbrush.

### 5. Electric bill

A student's room is provided with an electric meter for monthly billing. The student's electric bill is divided by the number of people in the room. The student's monthly bill averages from \$10 – \$30.

### 6. Deposit

A student is asked to deposit \$50 (Php 2500) upon entering the dormitory. The student can get 100% of his/her deposit if there is no problem during his/her length of stay. However, he/she cannot get the same amount if a damage has been incurred.

### 7. Keeping of personal belongings

A student should keep his/her wallets and cash, electronic dictionary, wrist watch, digital camera and laptop in a secured and locked place. He/she is advised to create a bank account and deposit cash in there. He/she should not make LSLC liable for lost items inside the room.

# Check List



- ✔ **Passport:**  
It must have the validity period of at least 6 months. Its copy must be secured.
- ✔ **Ticket:**  
One must check the flight number, the date of departure and arrival, and the departure-arrival time.
- ✔ **Visa:**  
The Philippines does not require visa for a 30 day stay. Beyond the time, a person can extend his/her VISA.
- ✔ **Photo:**  
A person should prepare six pictures (5x5cm) and submit to LSLC office. However, only two pictures must be prepared for those who would stay for four weeks only.
- ✔ **Cash and card:**  
You can exchange your dollars (\$ 100 bills) in advance. International debit cards (optional) can be issued by commercial banks.

- ✔ **Insurance:**  
Travel or international student insurance is required.
- ✔ **Personal items:**  
Glasses and lenses, dictionaries, notebooks, school supplies, personal medicines, and others must be checked.
- ✔ **Household goods:**  
Summer clothes, gowns, underwear & socks, toiletries, sporting goods, umbrellas, hats and shoes (slippers) must be prepared.
- ✔ **Mobile phone:**  
Sim card and data card can be purchased.
- ✔ **Preliminary check:**  
Use the internet to carefully check your training needs.
- ✔ **Note:**  
Tag your name, contact number and other necessary information on your personal belongings, for easy identification in case of loss.





LSLC  
LANGUAGE SKILLS LEARNING CENTER



Address Corner 17th - 18th Streets, Purok Sibuyas, Barangay 5, Bacolod City, Negros Occidental 6100, Philippines

Website www.lslc.info www.usls.edu.ph

Facebook csa.lslc97 Email lslc@usls.edu.ph